

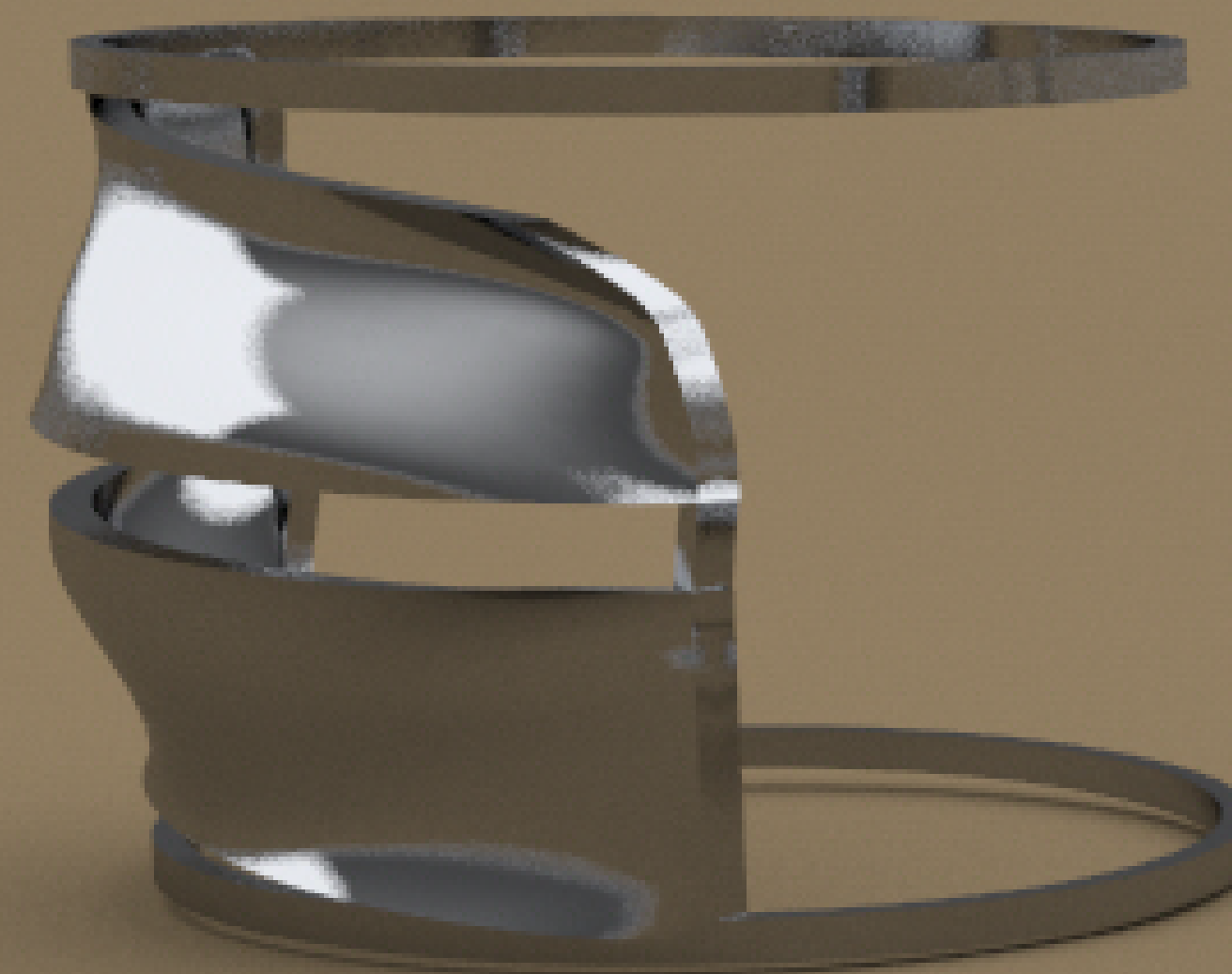
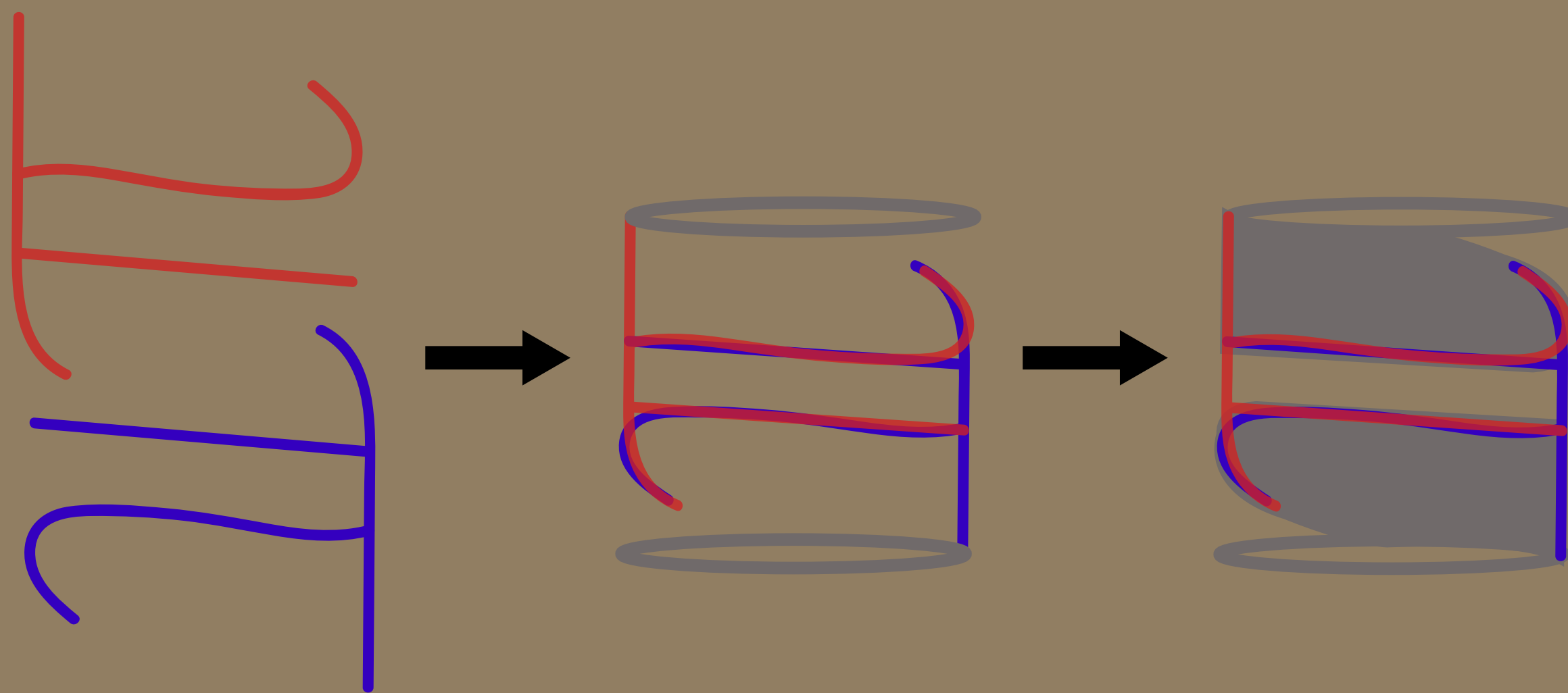
# PÍPRSTEN

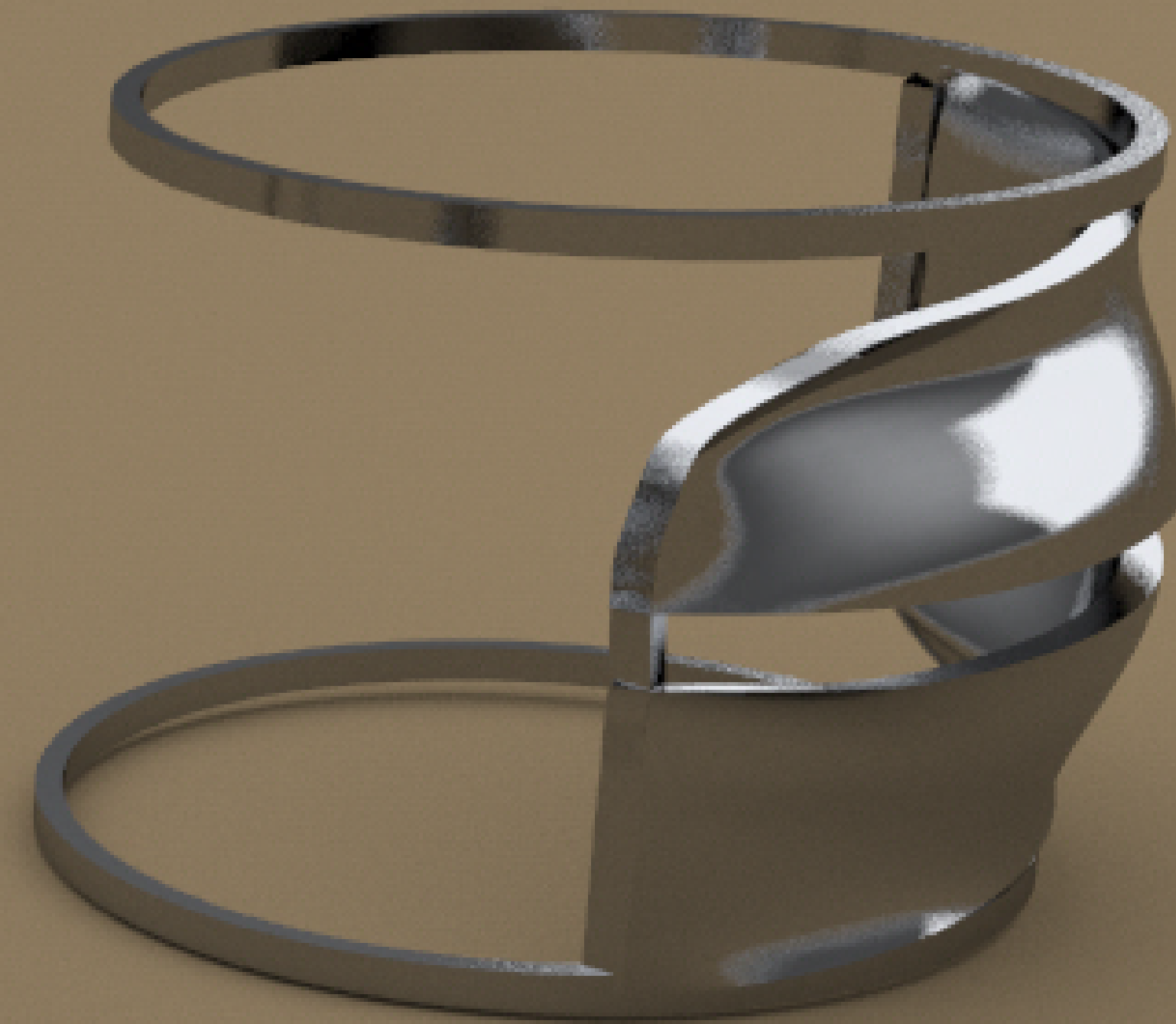
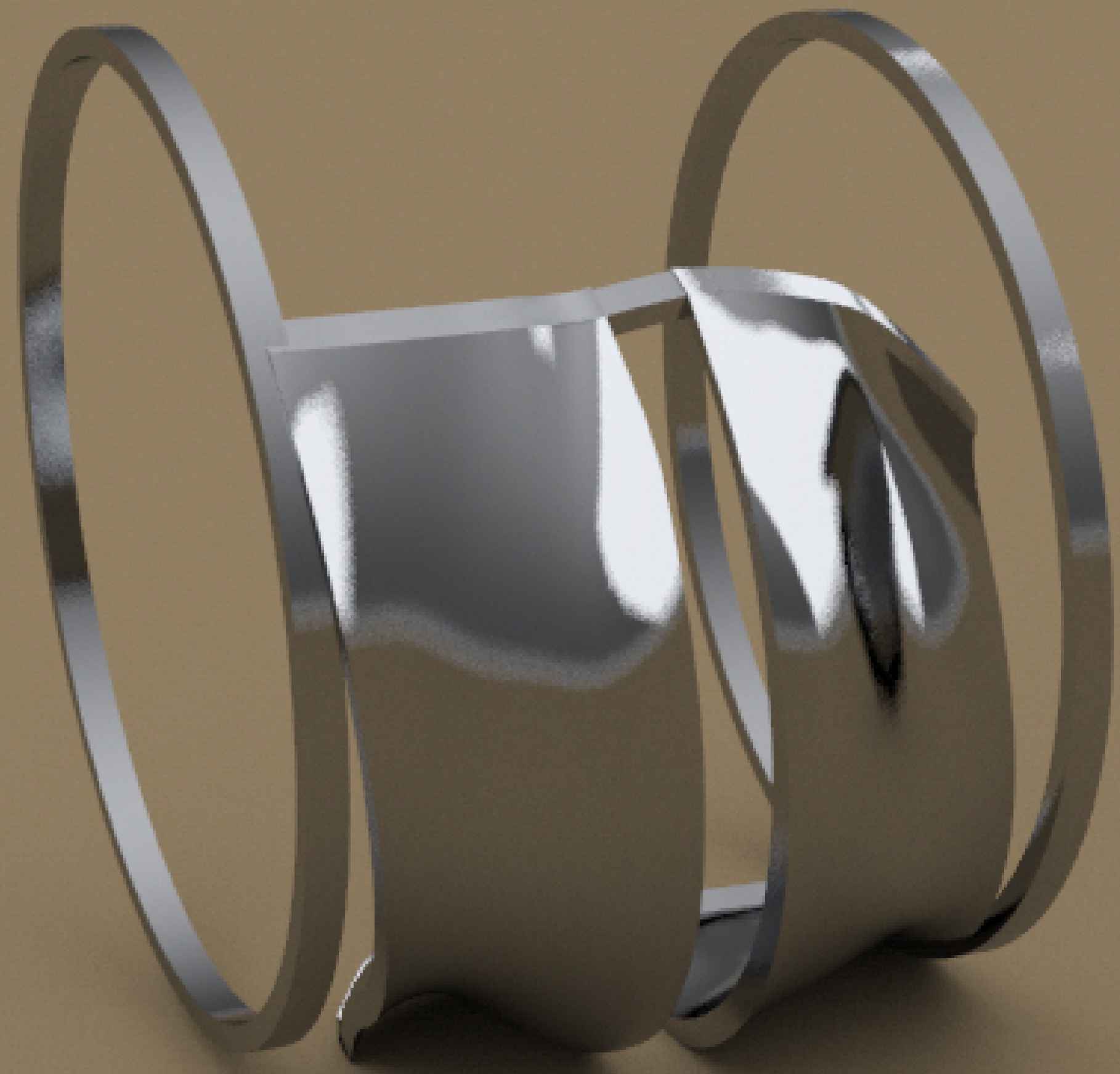
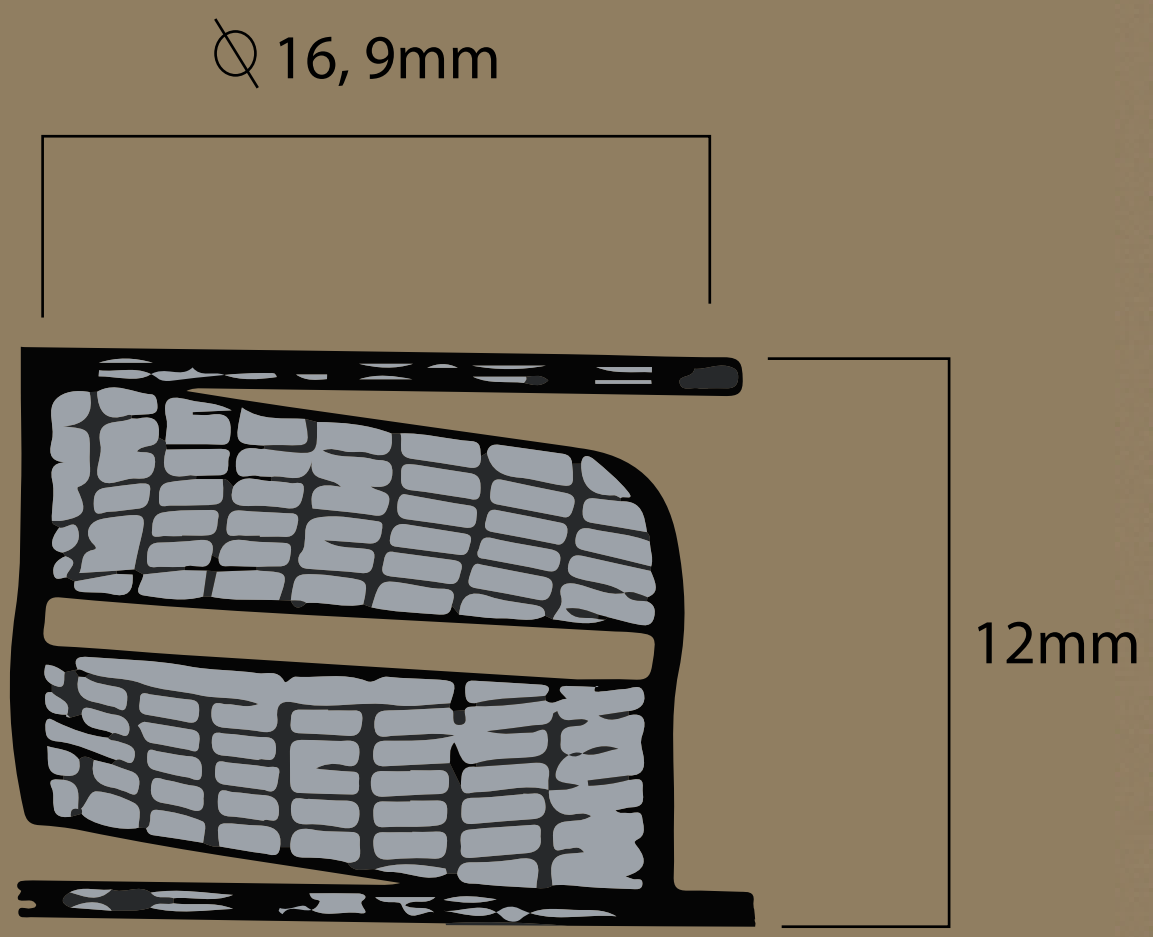
ŠPERK INŠPIROVANÝ MATEMATIKOU

Nikola Valová / ADE / 1.ročník

# Inšpirácia - $\pi$ - označenie ludolfovho čísla

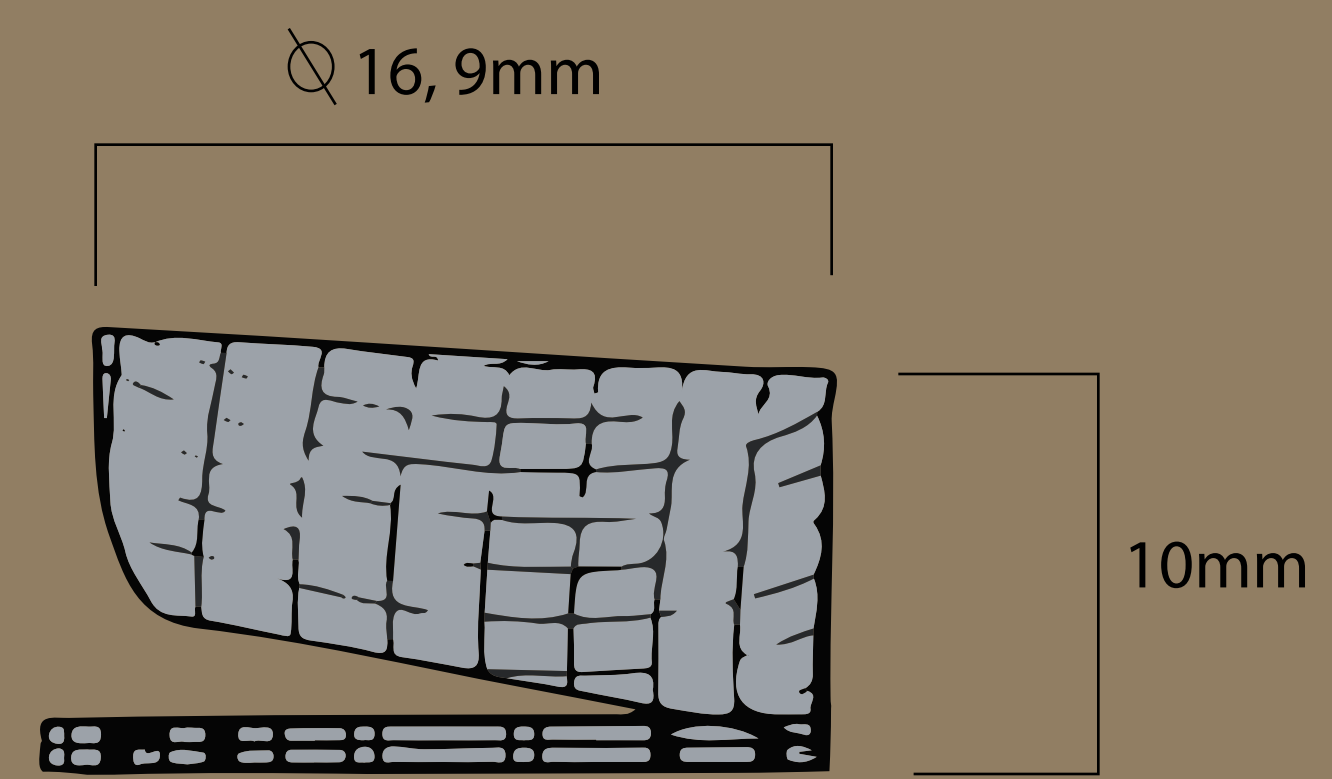
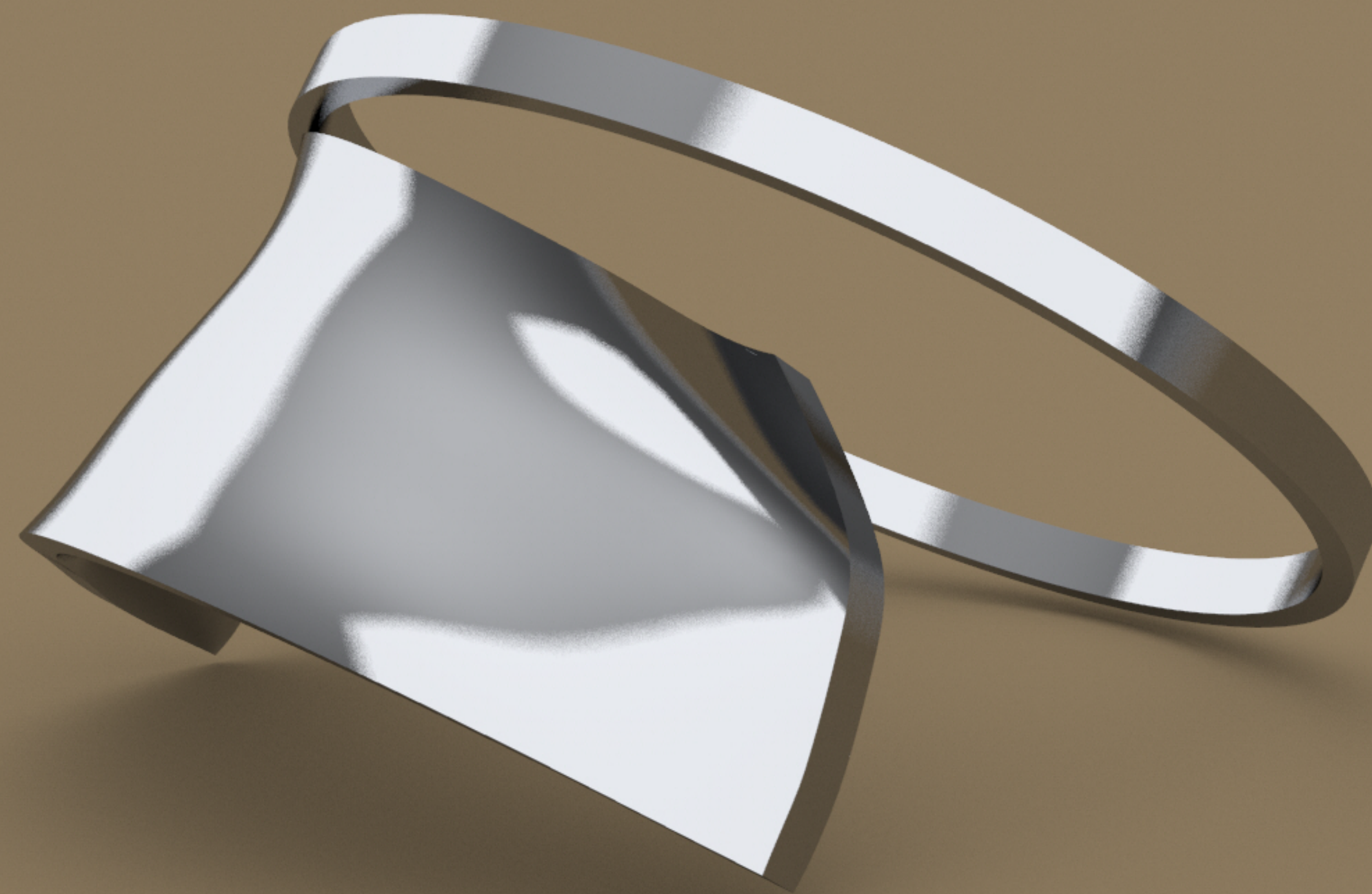
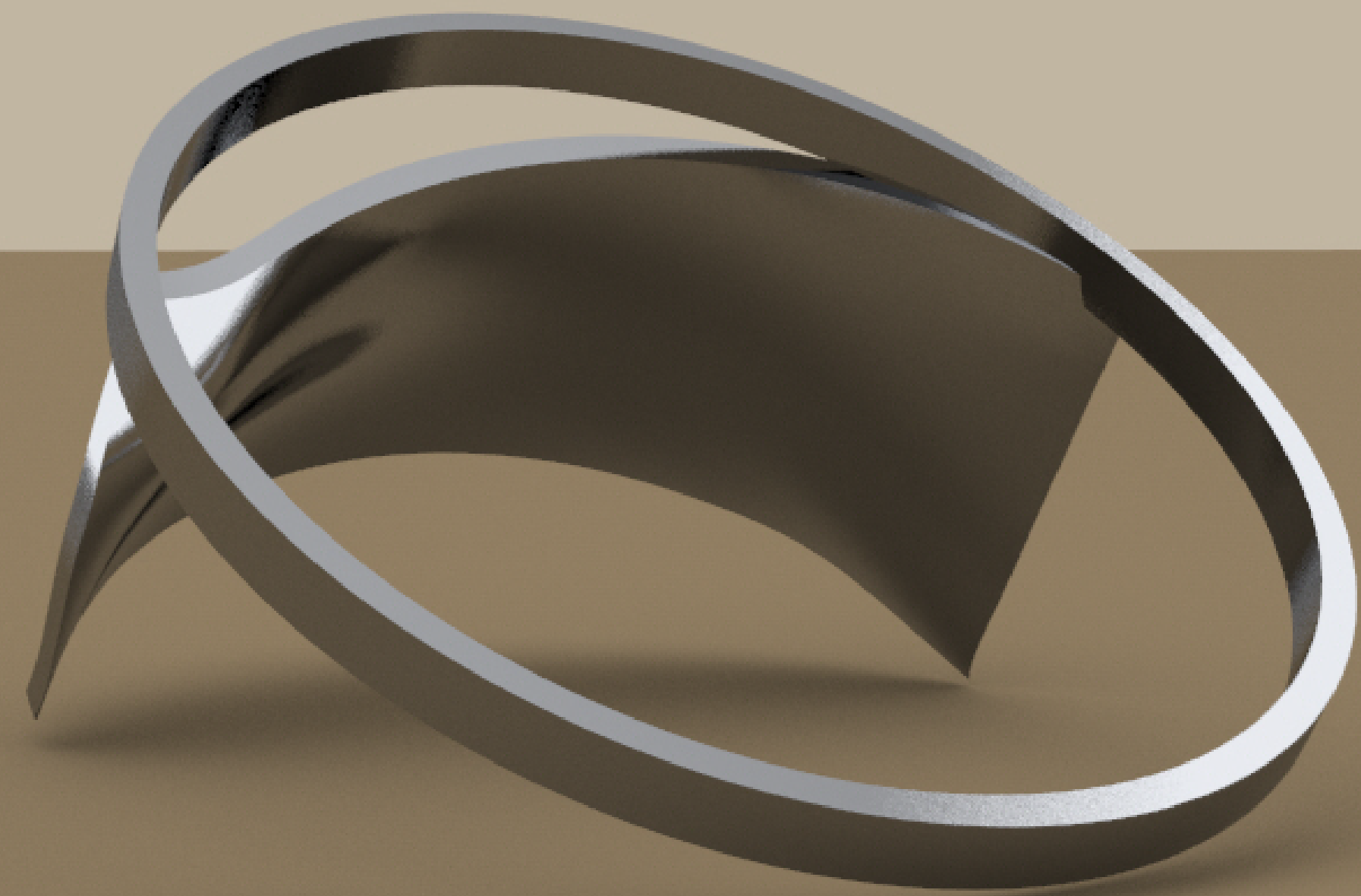
Ludolfovo číslo je matematická konštanta definovaná ako pomer obvodu kruhu k jeho priemeru. Jedným z najčastejších využití Ludolfovho čísla v matematike je výpočet obvodu a obsahu kruhu a tiež výpočet povrchu a objemu gule.







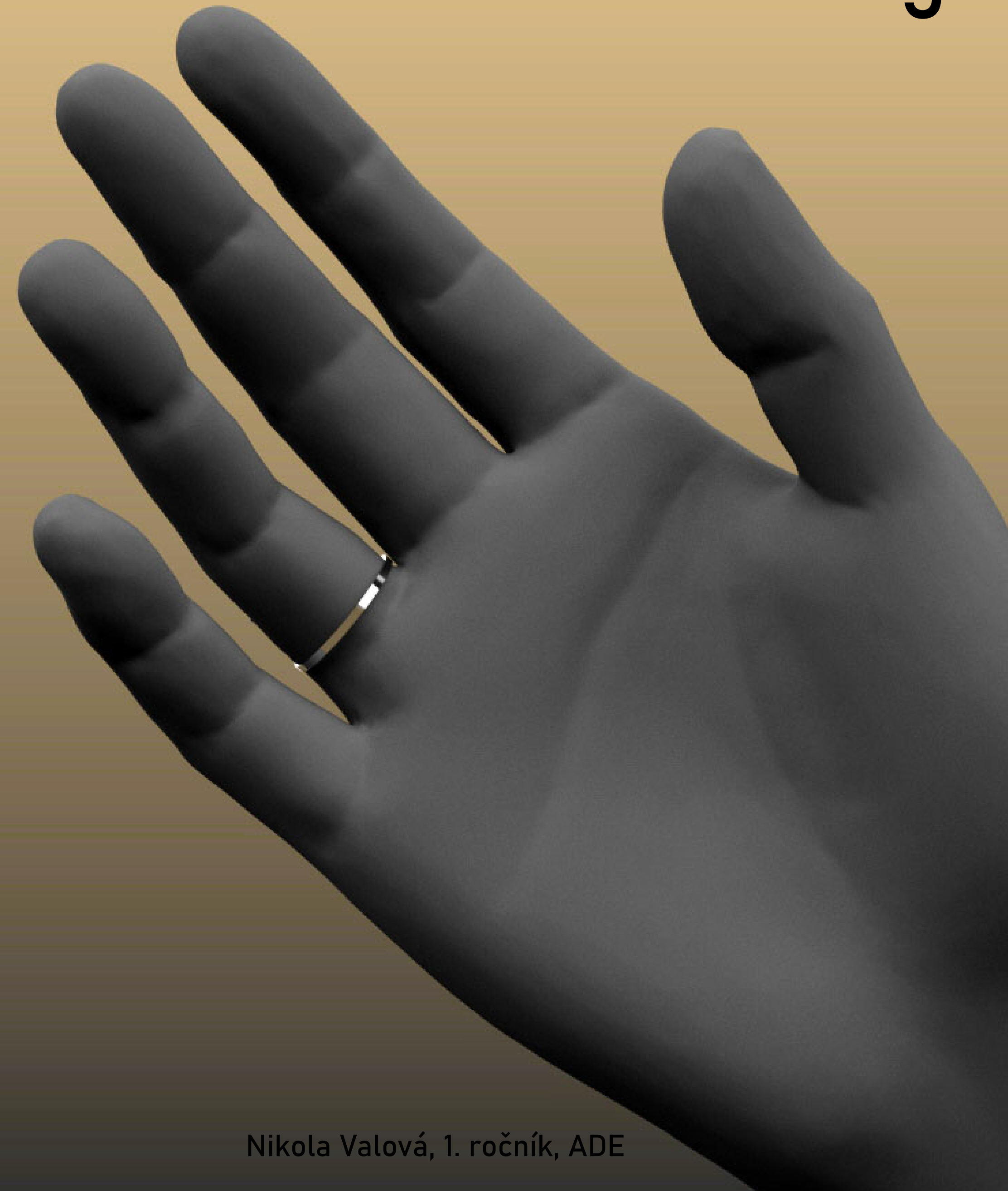




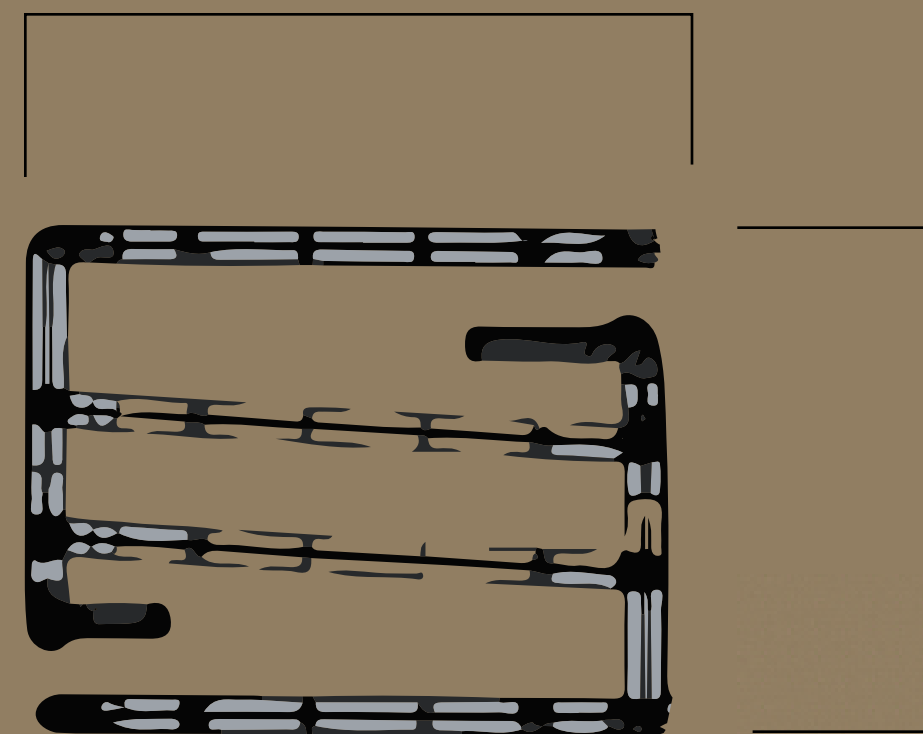


Náhľad

5

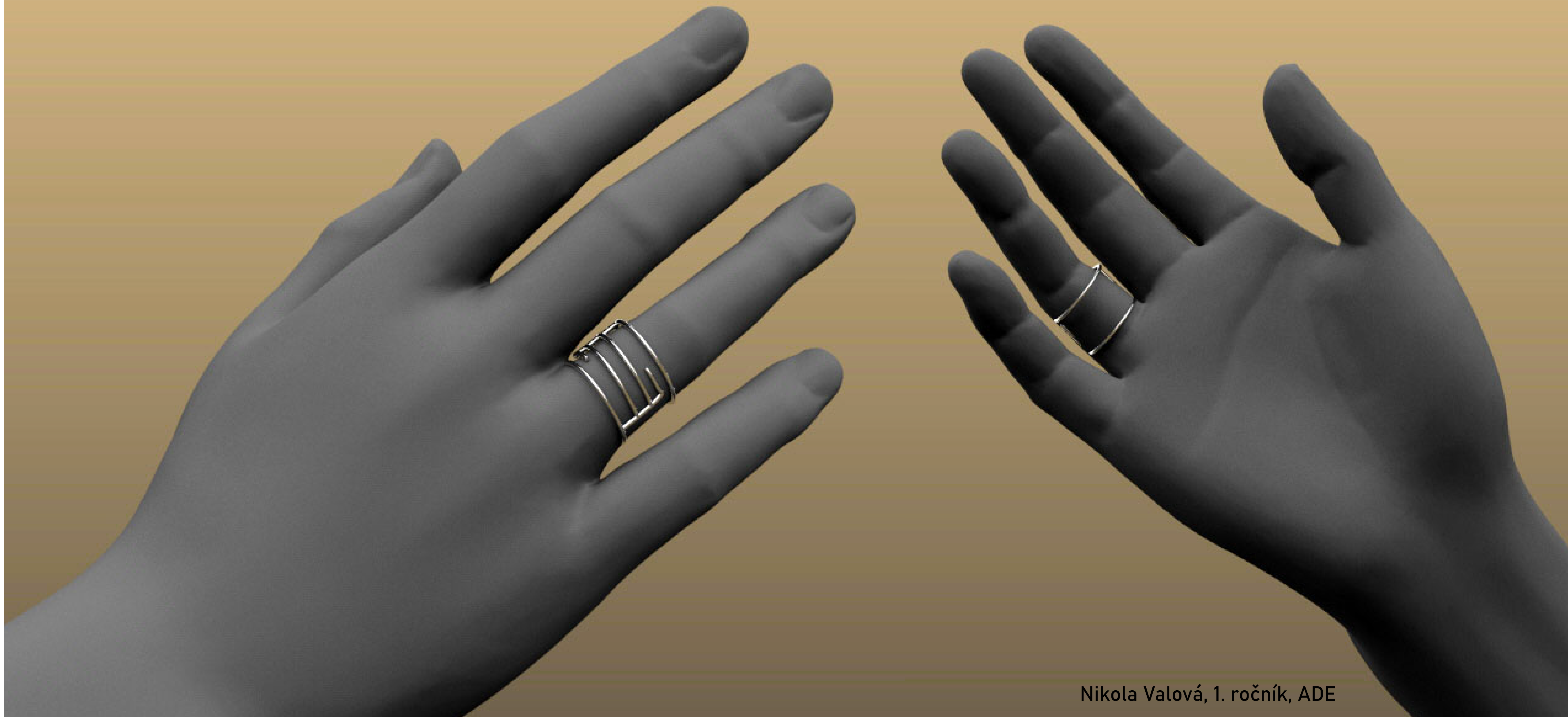


∅ 16,9mm



12mm







Ďakujem za pozornosť

