



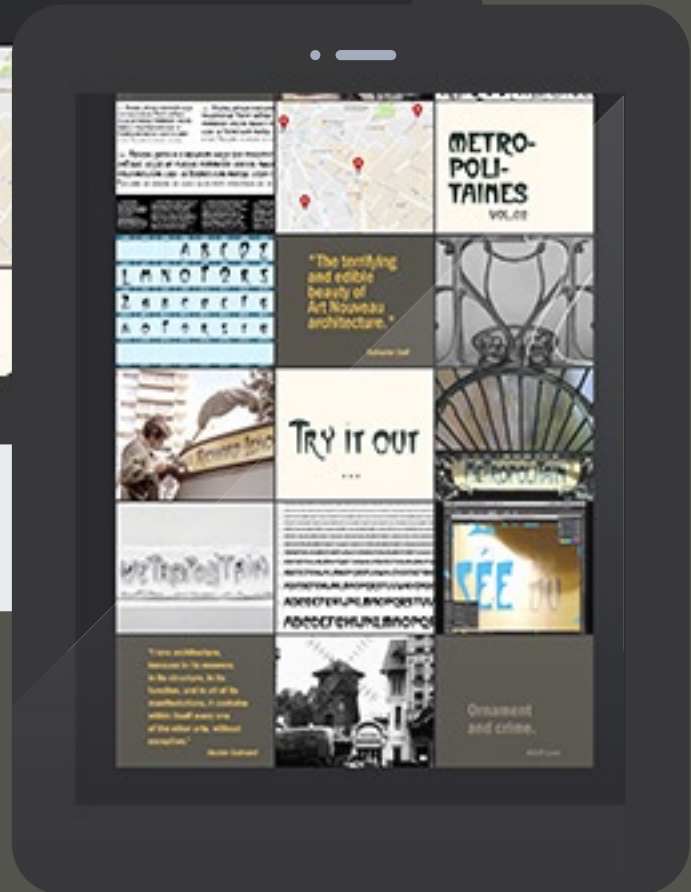
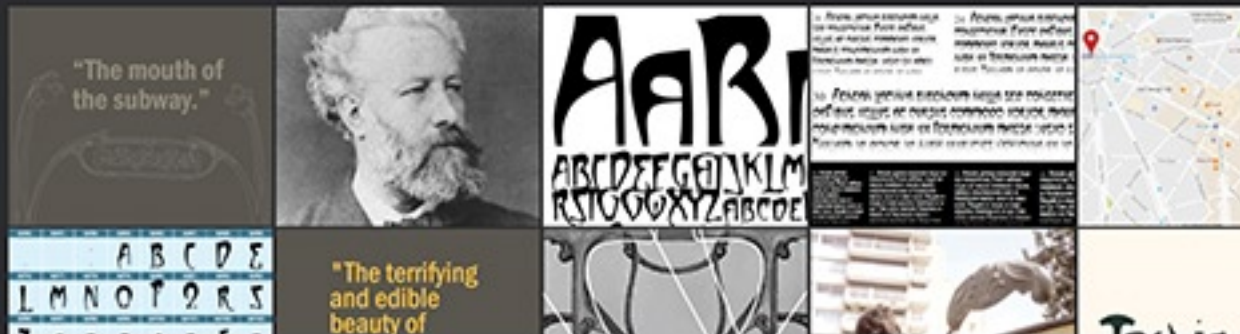
Jana Sedláčková  
3. ročník BcA.  
digitální design

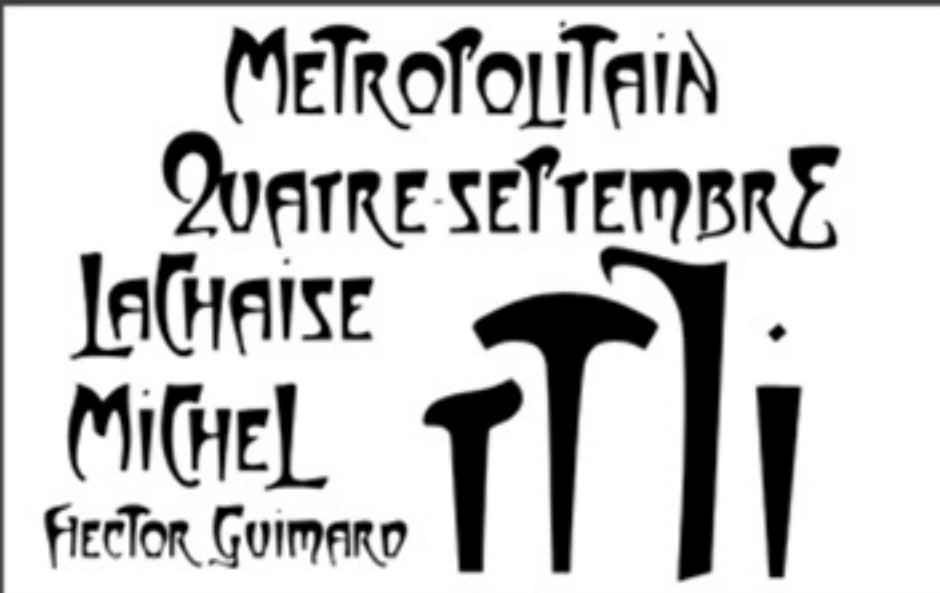
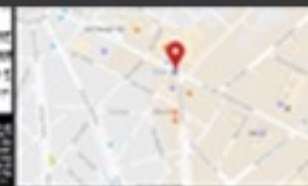
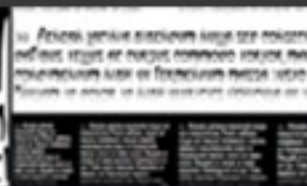
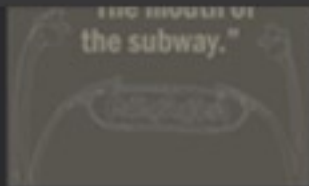


TURN ON YOUR STEAKERS



AUTHORS FONT METRO ART NOUVEAU ALL





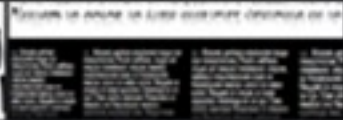
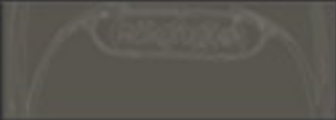
### Observations

- 1) Patterns with capitalization:  
All letters are what we understand as "capitals," but the typeface has different letters for the beginning and end of words, which we would traditionally call "capitals." However, these capitals are more similar to "scaled up" versions of their lowercase than a different letter. The first and last letter of a word are always capitals. The letters immediately left or right of these adjust to be "nested" with the capital. Also, in the case of some names, such as "LaChaise" or "Michel," there are extra capitals although the word is not broken up. However, the "t" does not follow this rule. Sometimes it appears in its capital form within a word, sometimes it does not ("Metropolitain" and "Quatre-Septembre" for example).
- 2) Letters like "Y" and "T" appear to be symmetrical, but have a slight lean to the right.
- 3) Accent marks change, especially on the E. The "dié" on the i also changes to match the highest point on the word, based on what letters are in it.
- 4) In terms of the sign's actual construction, letters appear to be "baked on" to their background—they have a bit of depth.



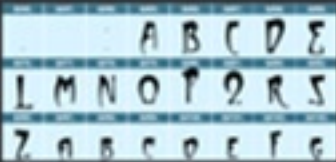
"The terrifying





### Tips To See Metropolitan Font With Metro Numbers

- 1900 Paris 16e 'Porte Dauphine' ligne 2
- 1900 Paris 1e 'Palais Royal - Musée du Louvre' lignes n°1 et 7
- 1900 Paris 1e 'Châtelet' lignes n°1, 4, 7, 11
- 1900 Paris 18e 'Abbesses' ligne n°12
- 1900 Paris 12e 'Nation' lignes n°1, 2, 6 et 9
- 1900 Paris 1e 'Tuileries' ligne n°1
- 1900 Paris 1e 'Louvre Rivoli' ligne n°1
- 1902 Paris 16e 'Victor Hugo' ligne n°2
- 1902 Paris 16e 'Monnaie' ligne n°2
- 1904 Paris 2e 'Réaumur-Sébastopol' lignes n°3 et 4
- 1904 Paris 2e 'Sébastopol' ligne n°3
- 1905 Paris 12e 'Bastille' lignes n°1, 5 et 8
- 1906 Paris 14e 'Staspa' lignes n°4 et 6
- 1906 Paris 14e 'Denfert-Rochereau' lignes n°4 et 6



"The terrifying and edible beauty of Art Nouveau"



