

KŘESLO | papírový objekt

Hladký Richard

2.ročník Produktový design

Univerzita Tomáše Bati ve Zlíně

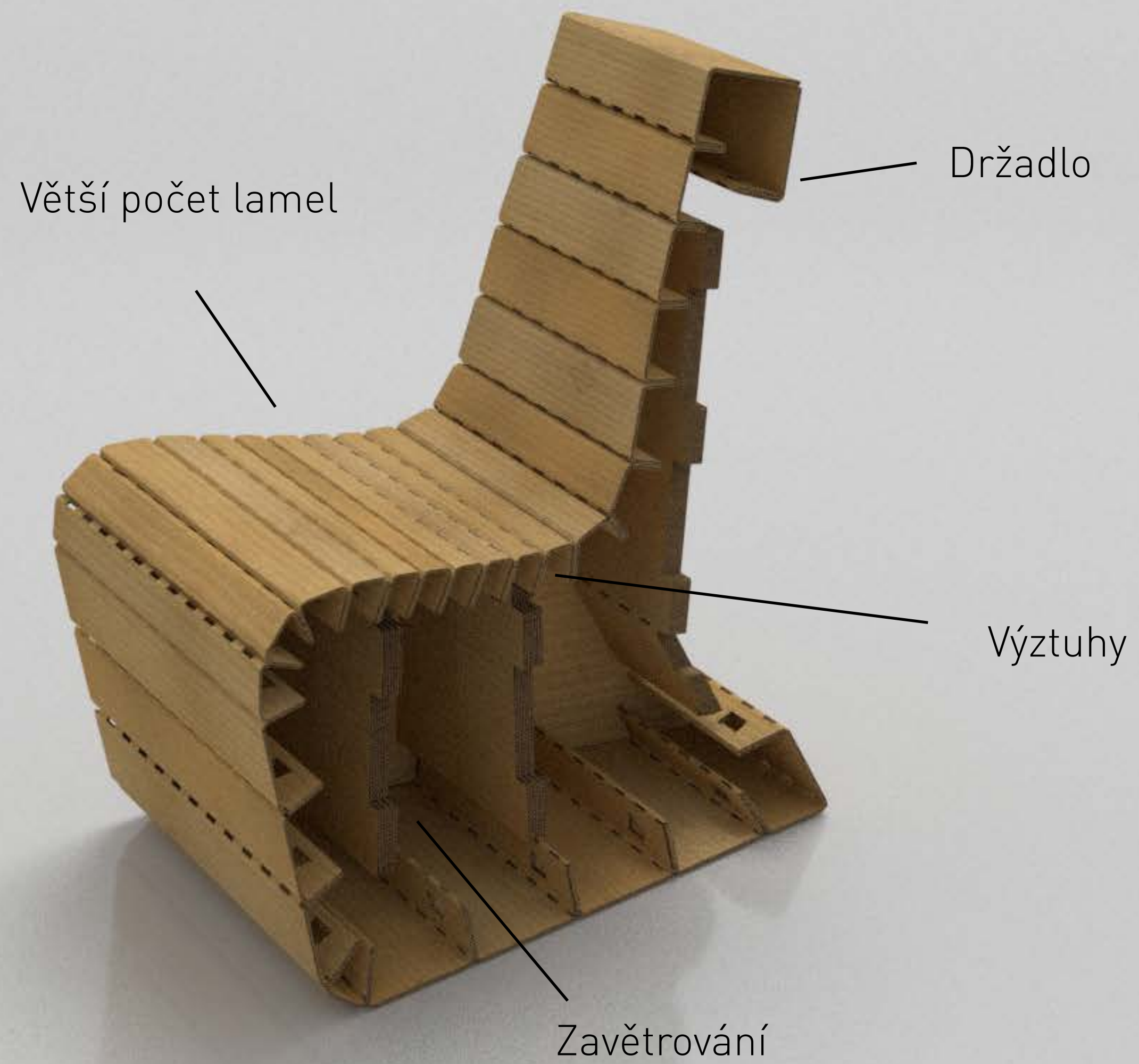




Nový design



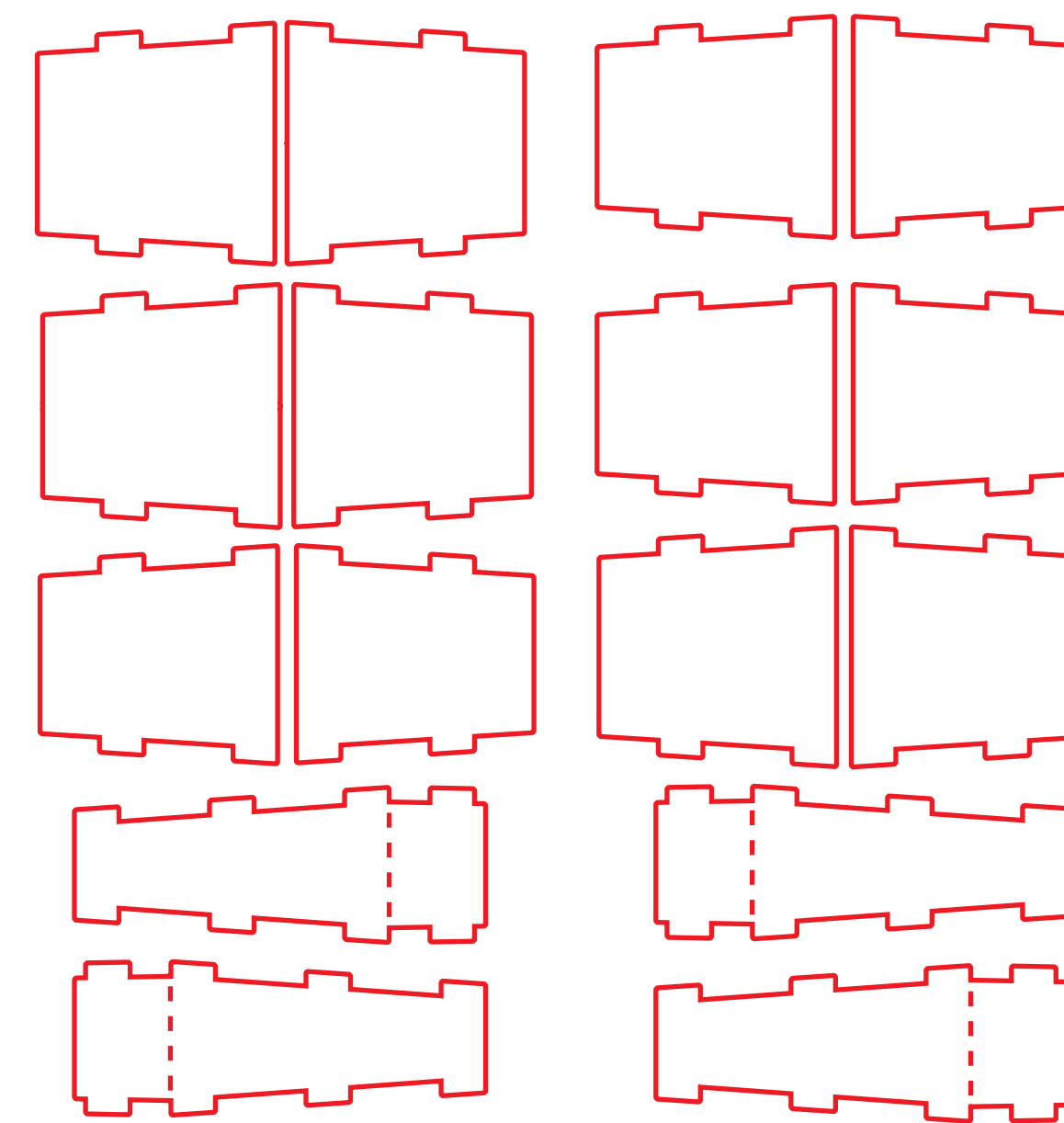
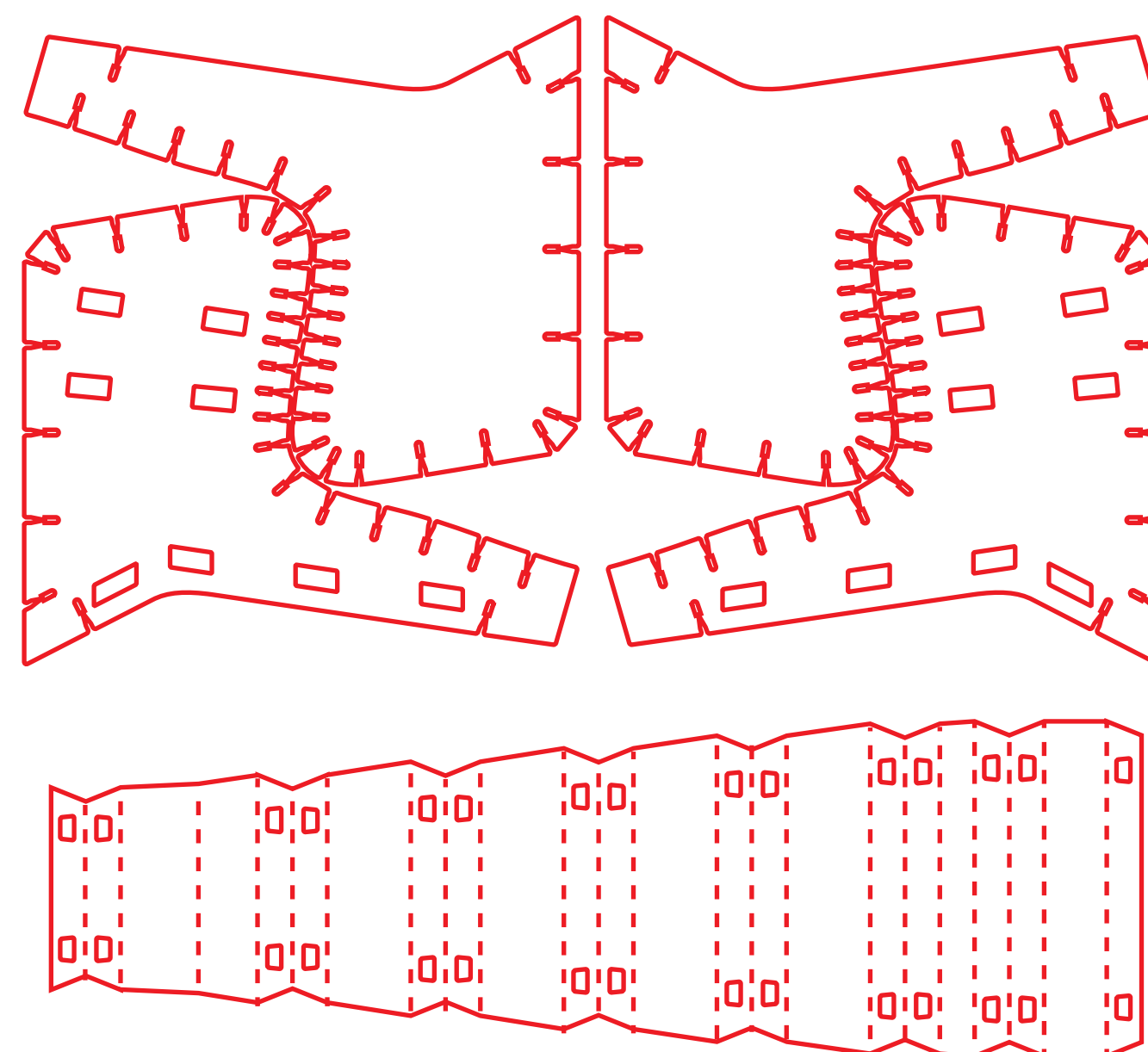
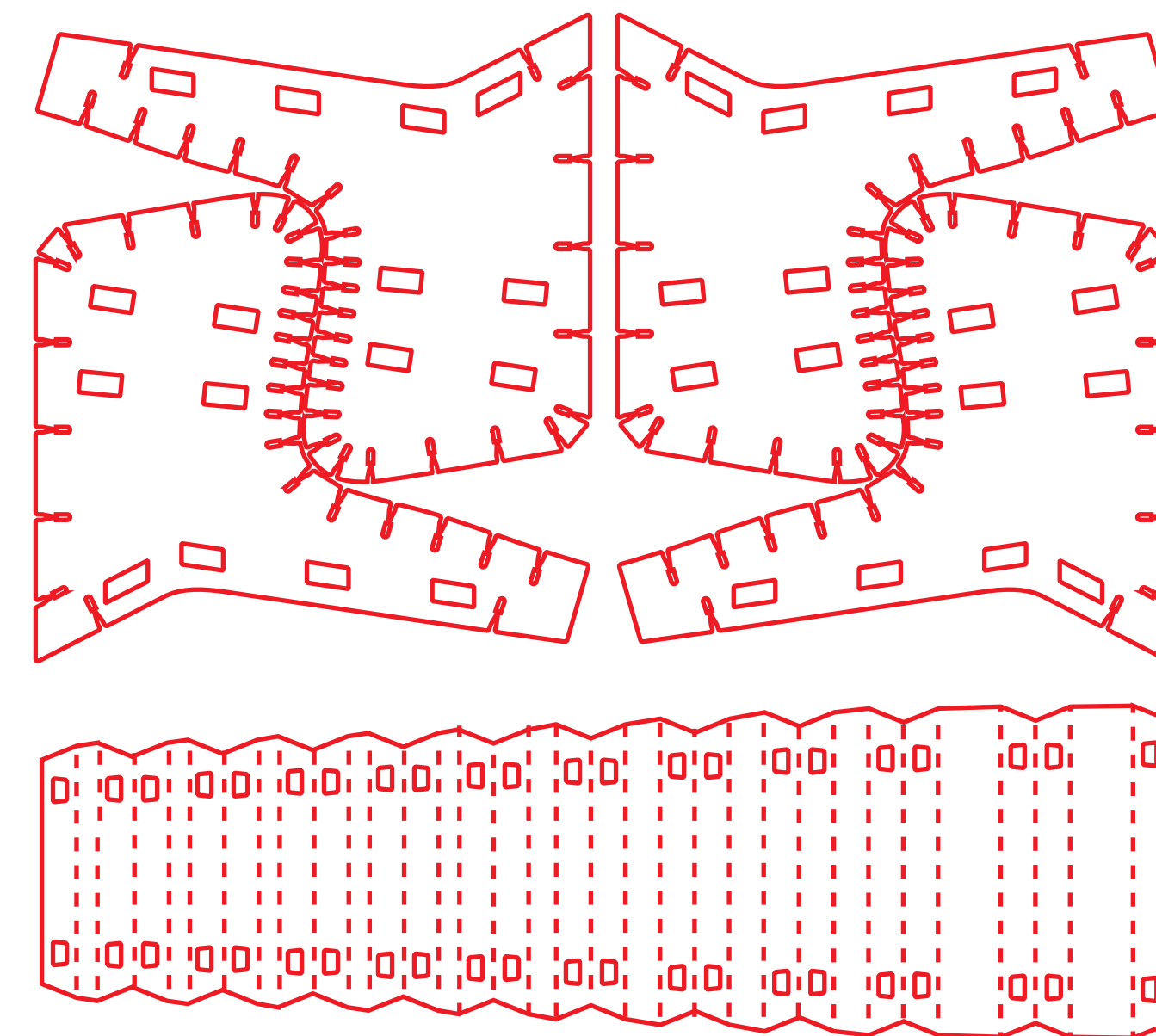
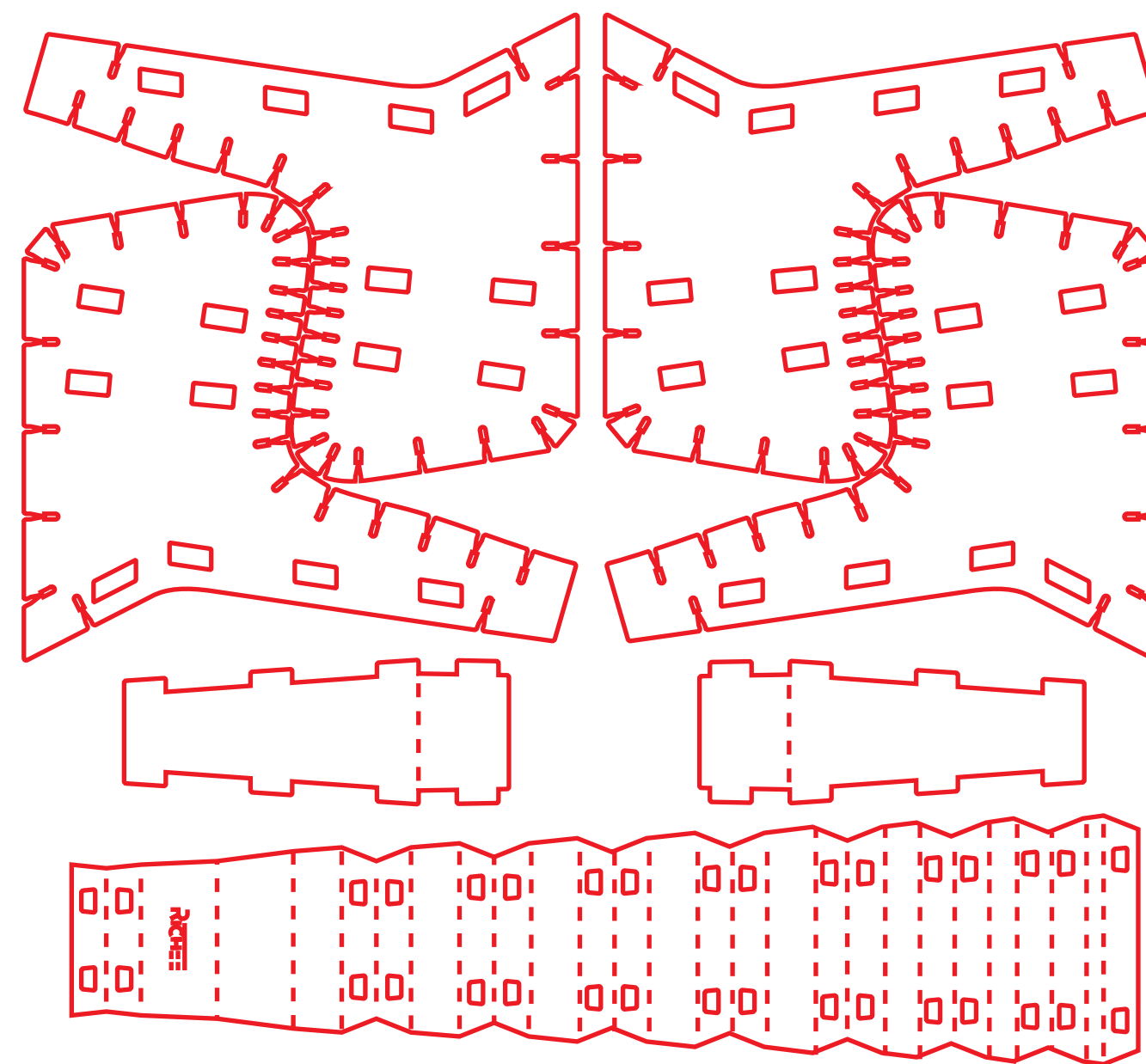
Starý design



Celková spotřeba materiálu:

4 archy 1700 × 1600

10.88 m²



0 45% ménši spotřeba materiálu

DĚKUJI ZA POZORNOST