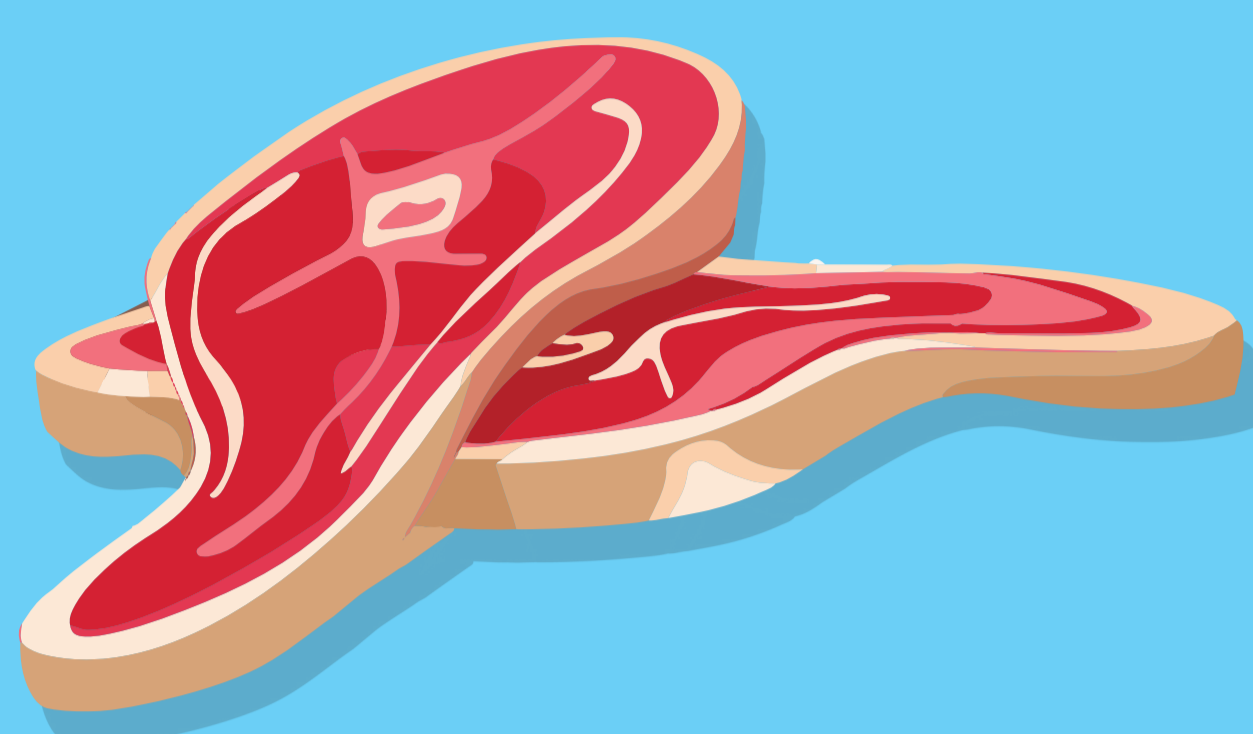
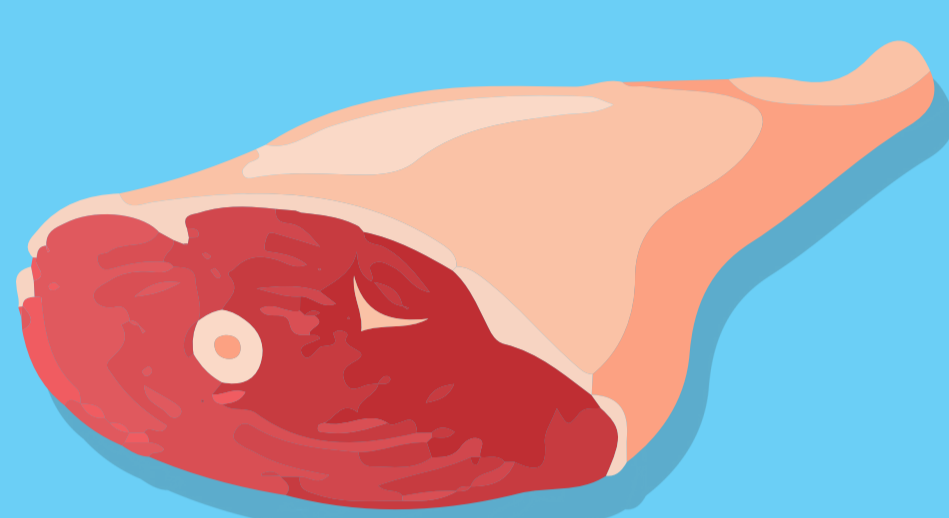


Kolik litrů vody se spotřebuje na výrobu...



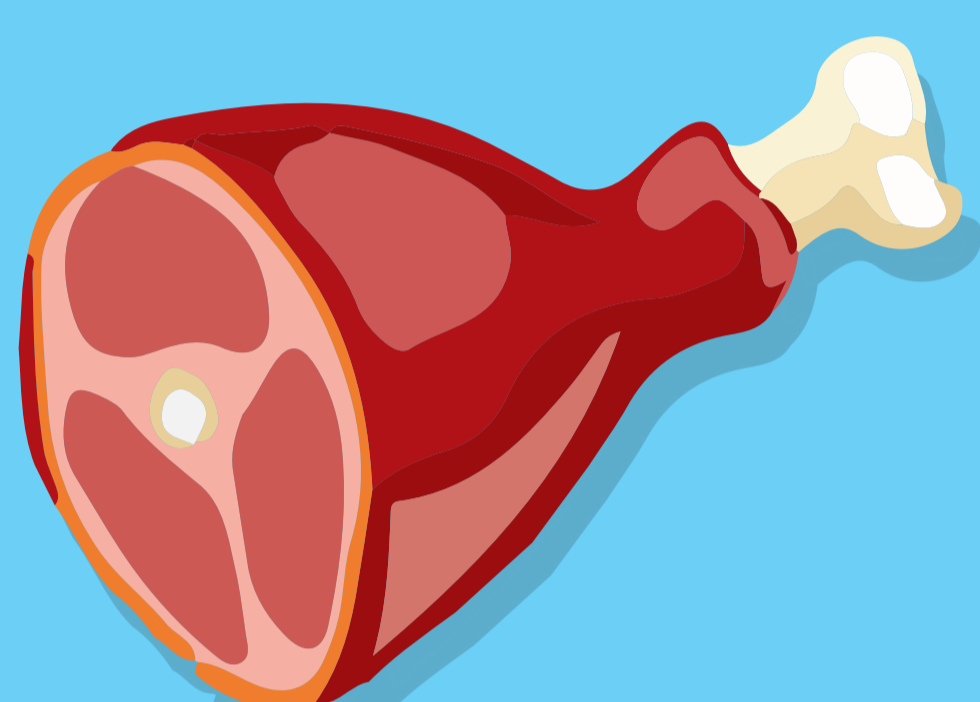
15000 l

1 kg hovězího



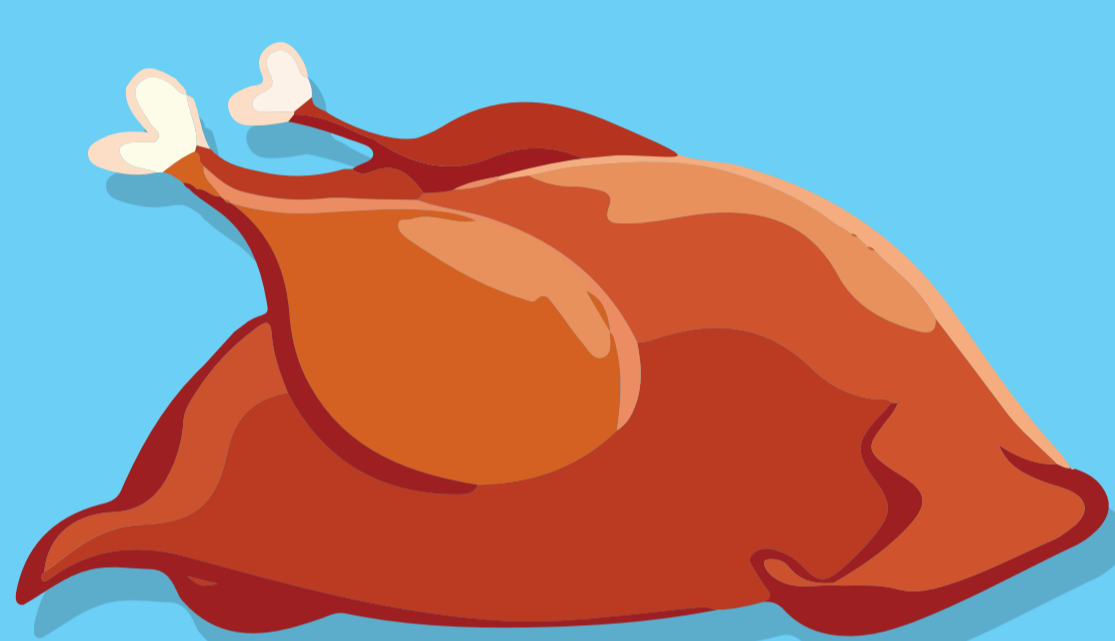
9000 l

1 kg skopového



6000 l

1 kg vepřového



4300 l

1 kg kuřecího



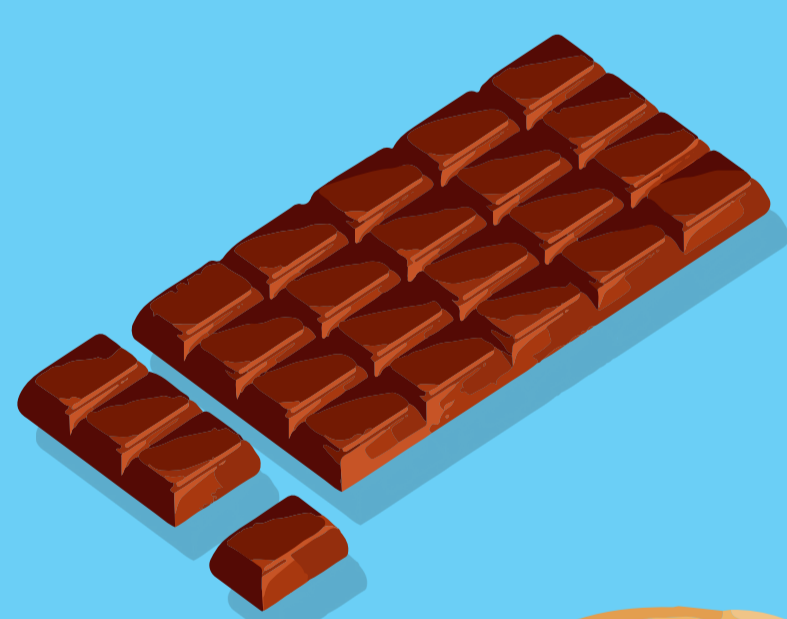
3000 l

1 kg sýru



2500 l

1 hamburger



1700 l

1 tabulka čokolády



1600 l

1 kg chleba



1200 l

1 pizza



500 l

1kg jablek