

Perl wax

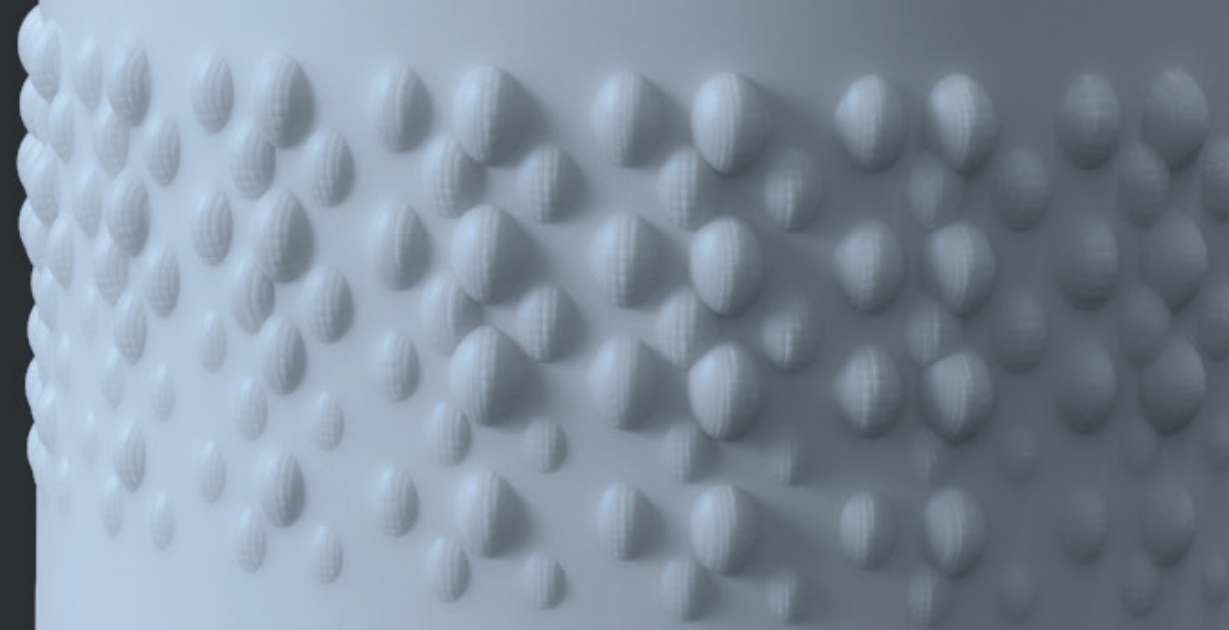
Nikola Orságová / UTB / FMK / ADE_1 / KOMBINATORIKA_PERLWAX



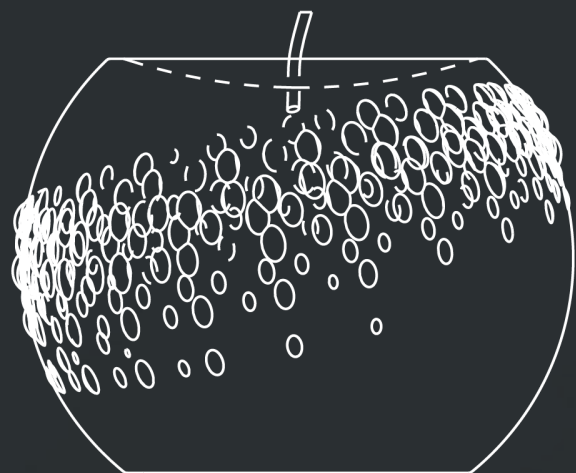
Struktura

Strukturura je inspirovaná kapkami stékajícího vosku.
Postupným zapouštěním a vynořováním vznikla textura připomínající perly.

Materiál svíčky - bílý vosk
Materiál podtác - černé sklo

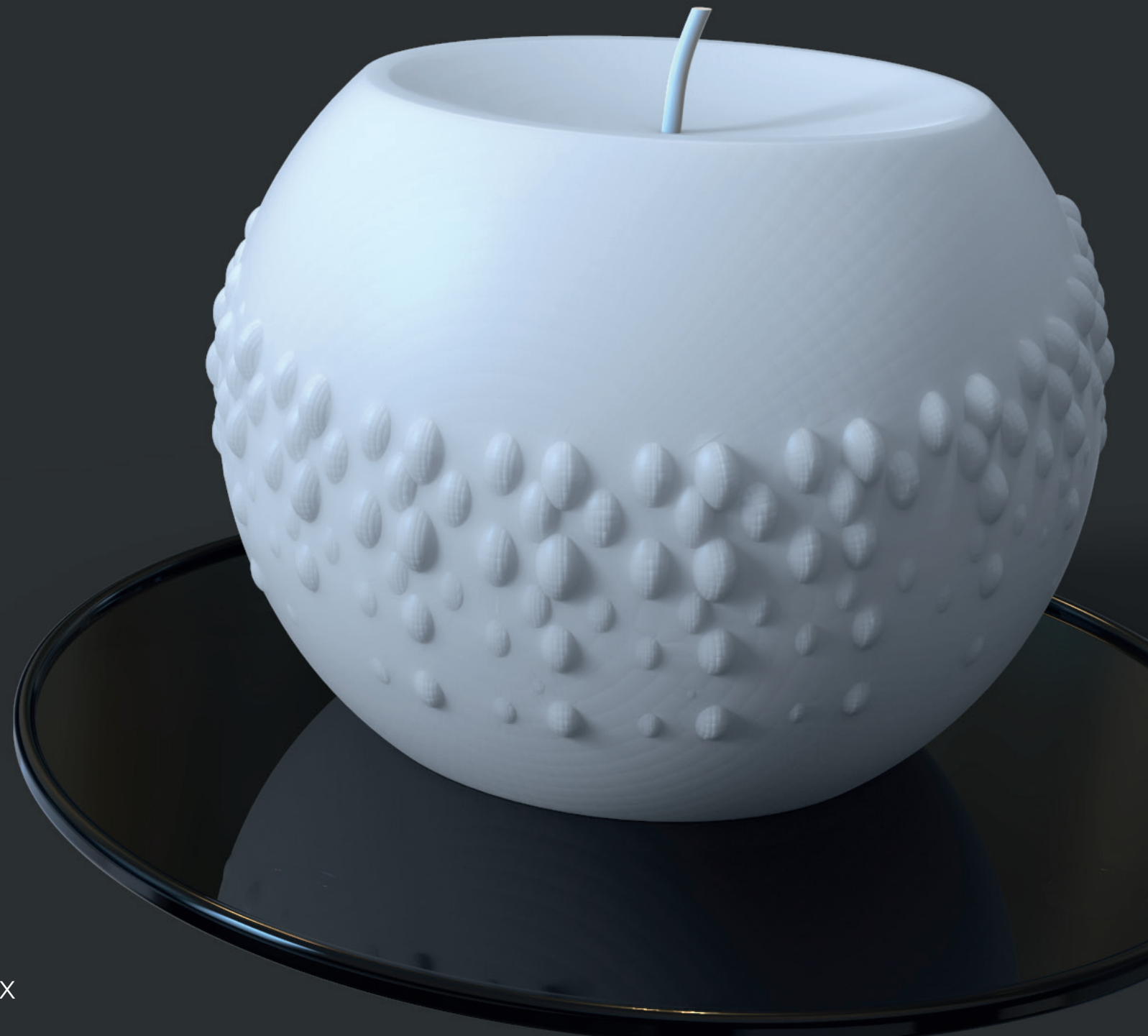


Svíčka_01

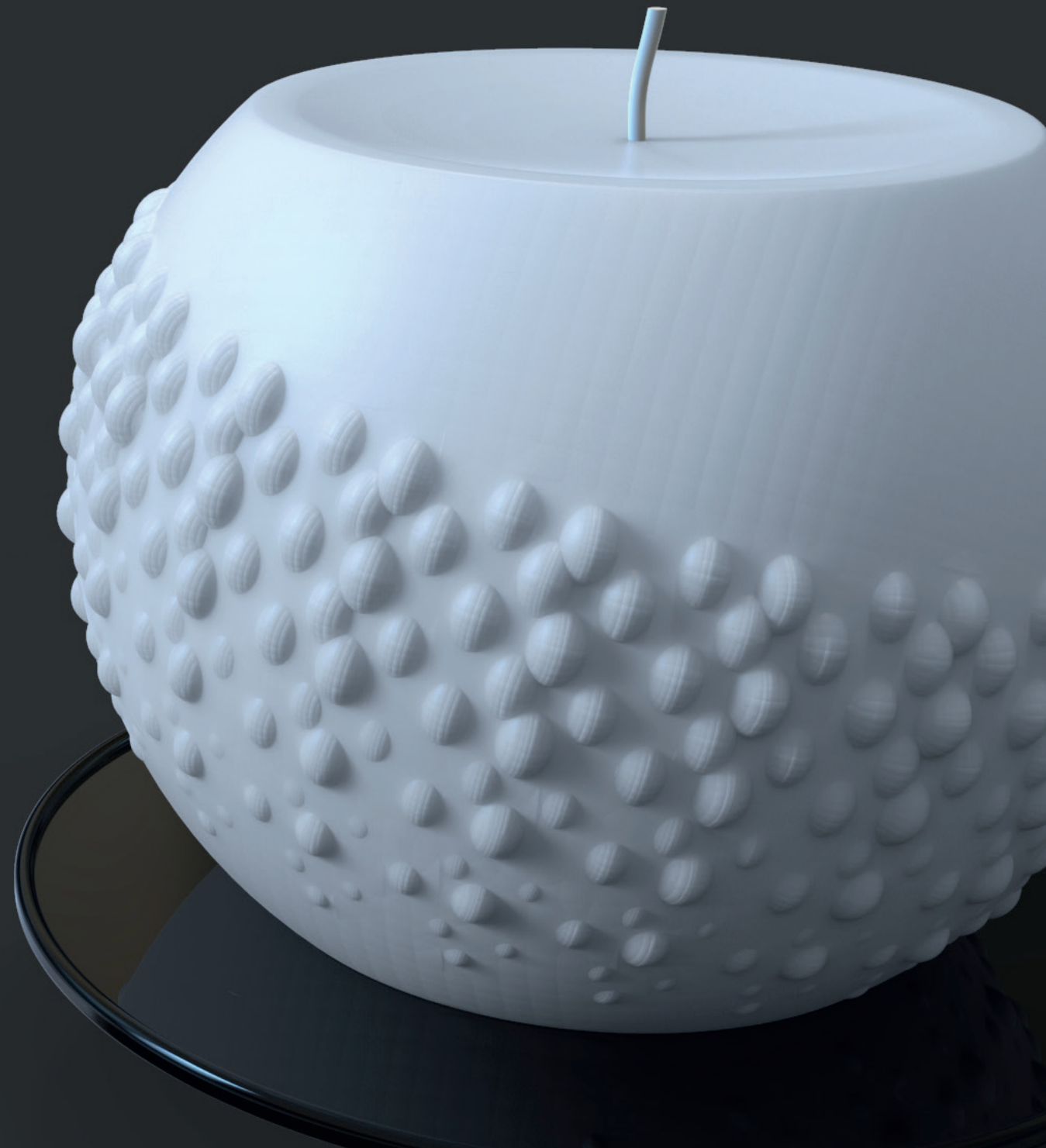
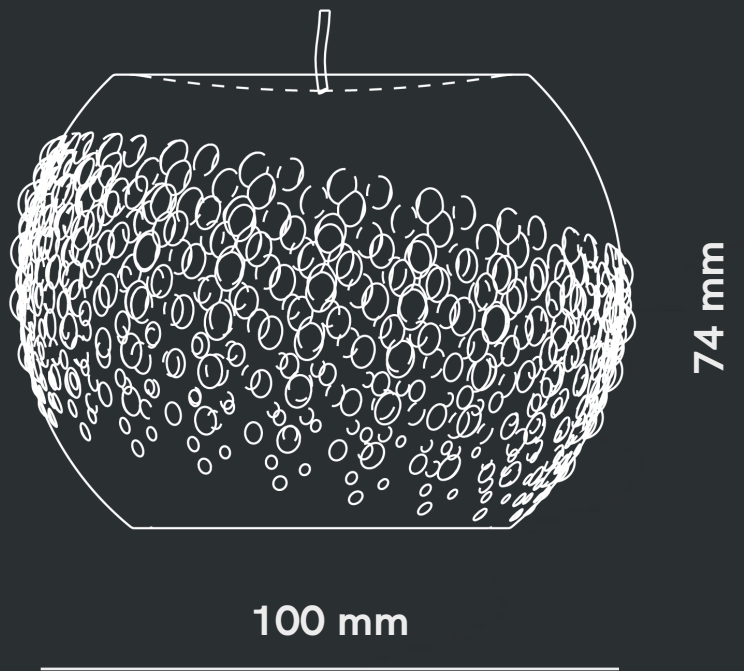


74 mm

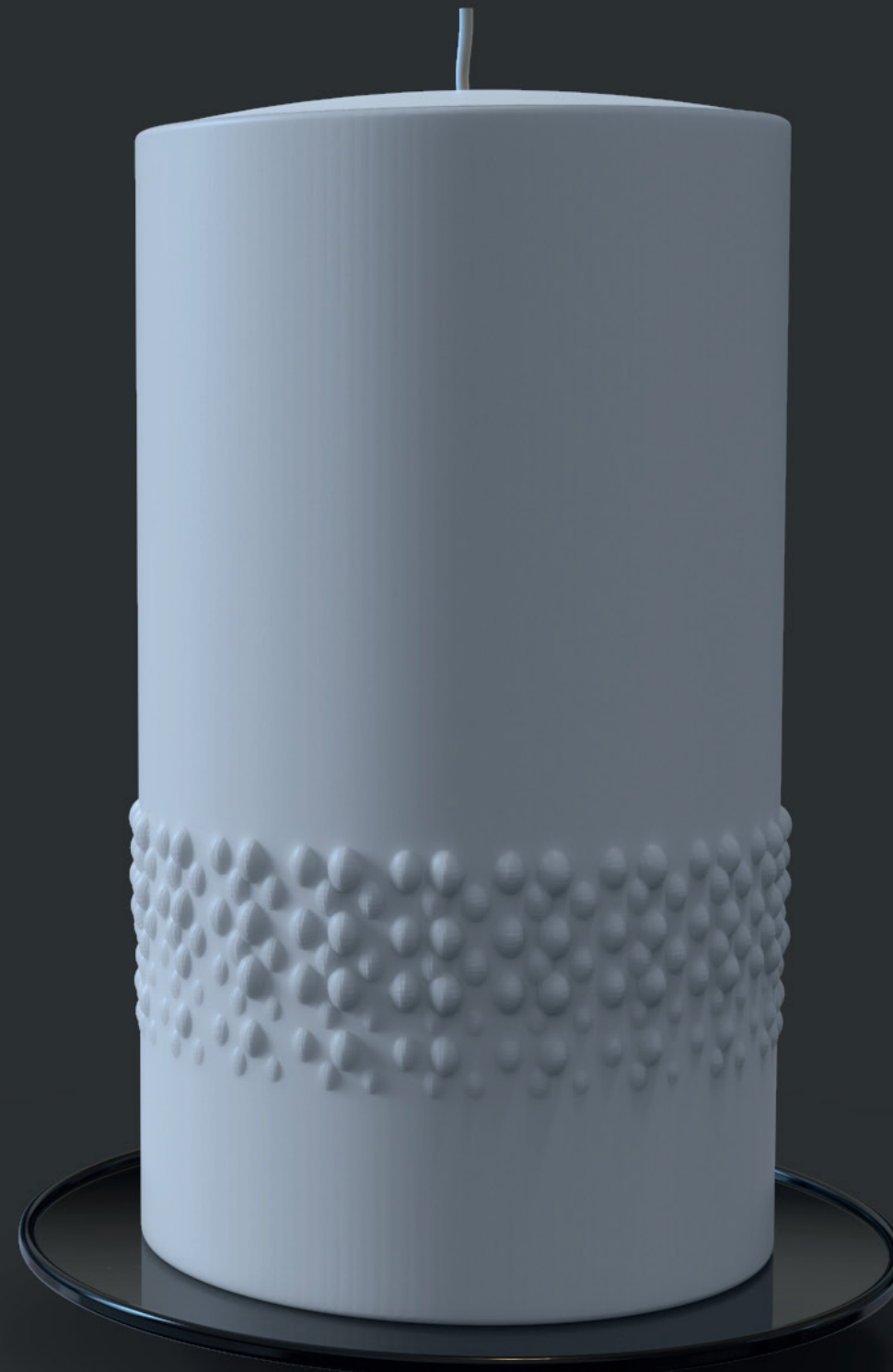
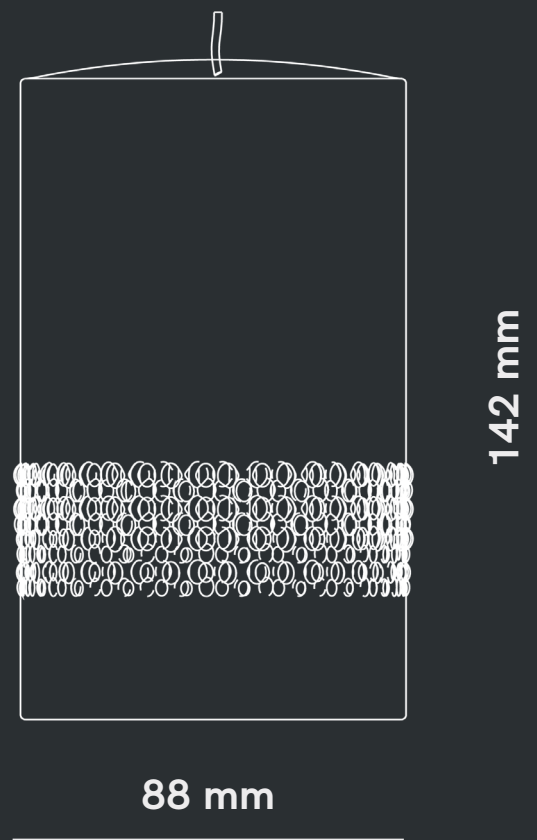
56 mm



Svíčka_02



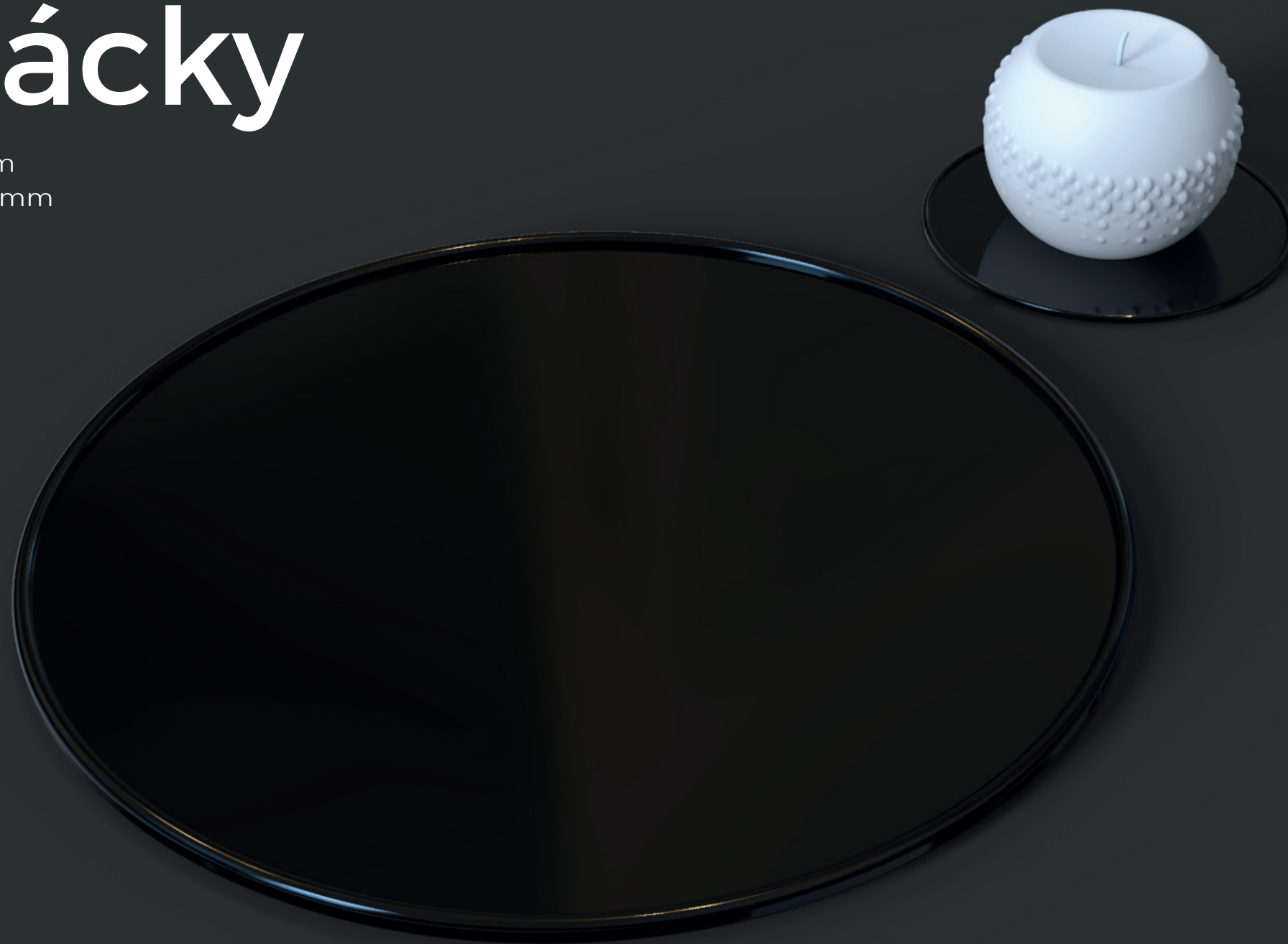
Svíčka_03



Podtácky

Pro sadu Ø 280.5 mm

Pro jeden kus Ø 110 mm



Děkuji za pozornost

